

December 10, 2014

To whom it may concern

Sumitomo Mitsui Trust Holdings, Inc.

**Notice Regarding Execution of a Memorandum of Understanding
for Business Alliance with Hana Financial Group**

Sumitomo Mitsui Trust Holdings, Inc. (“SMTH”, President: Kunitaro Kitamura) hereby announces that on December 10, 2014, SMTH and Hana Financial Group Inc. (“Hana FG”, Chairman & CEO: Kim Jung-tai) have agreed to collaborate with each other in relation to the provision of financial services to customers in Japan, South Korea and other countries, and executed a memorandum of understanding (“MOU”) for this purpose.

Hana FG is one of the largest financial groups in South Korea and owns banks, a trust company, a securities company and an asset management company with several other companies as its affiliates. It has a global network of 128 offices and affiliates in 24 countries aside from its operations in South Korea.

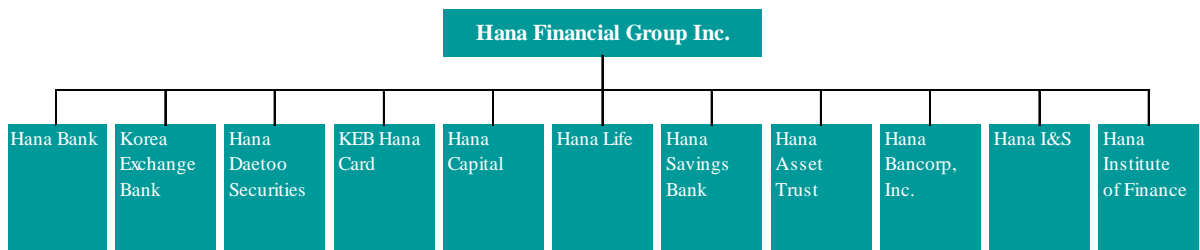
Sumitomo Mitsui Trust Bank, Limited already entered into a Memorandum of Understanding for business alliances with each of Hana Bank and Korea Exchange Bank, both of which are affiliates of Hana FG, in 2006 and 2013, respectively. The MOU between SMTH and Hana FG will expand the scope of the business alliance to the SMTH group and the Hana FG group, to include their respective affiliates. SMTH and Hana FG seek to integrate the expertise and strengths of each company, and provide total solutions to customers in various fields of banking services such as project finance, corporate finance and asset finance as well as asset management and real estate-related services among others.

SMTH and Hana FG will work to enhance the collaboration, aiming to expand products and services for their customers.

(Reference) Outline of Hana Financial Group (as of December 31, 2013)

Name	Hana Financial Group Inc.
Address of the Head Office	Seoul, Korea
Principal Group Companies	Hana Bank, Korea Exchange Bank, Hana Daetoo Securities, Hana Capital, Hana Savings Bank, Hana Asset Trust, Hana Asset Management, Hana Life, Hana Institute of Finance and others
Year of Incorporation	1971
Total Assets	368,500 billion Korean Won (approximately 33,200 billion Yen)

Group network:



Created by SMTH according to website of Hana FG

For further information, please contact:
IR Department, Sumitomo Mitsui Trust Holdings, Inc.
Telephone: +81-3-3286-8354

End.